

flyscreen PET DOOR

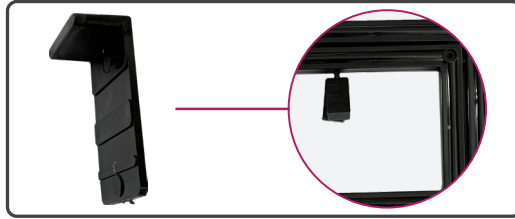
Installation Instructions



Components List



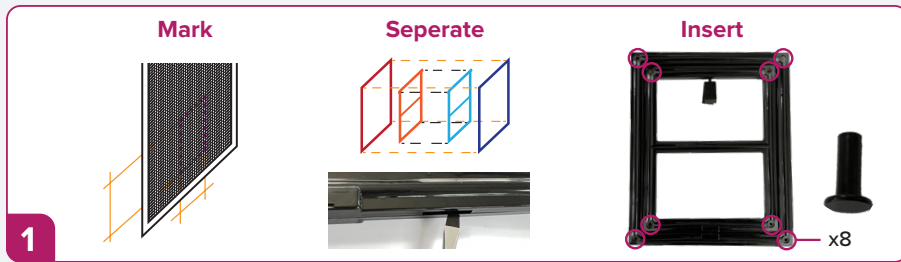
8 x Screw & screw sleeve



2 x Lock pin (twist and remove from door flap)

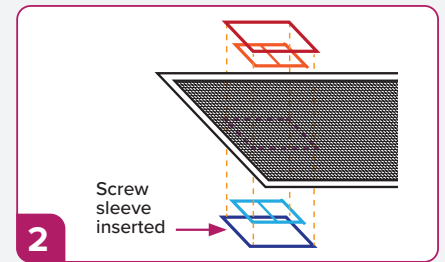
Door frame:
291mm H
243mm W

Door opening:
254mm H
203mm W

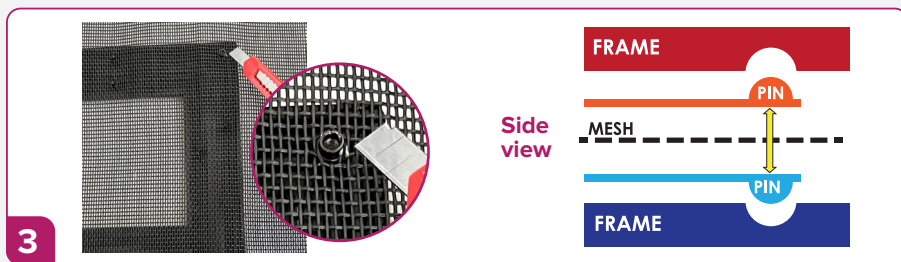


Preparation:

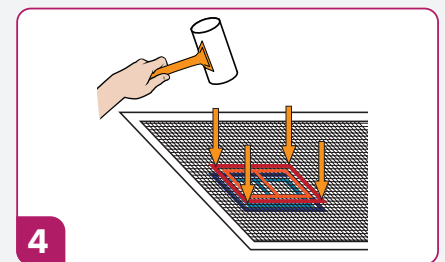
- Measure & mark pet door position, using masking tape or similar. For installation ease, place door on flat surface.
- Use a flat head screwdriver to wedge in the locking latch, gently separate front and back sides of door & frame.
- Insert screw sleeve on one side of door.



Align pet door sides on marked positions, with screw sleeve side positioned on bottom.



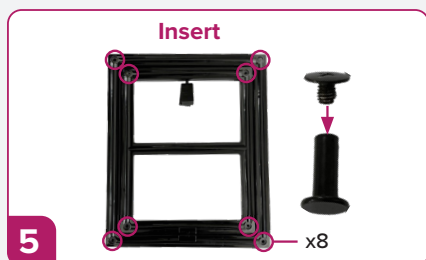
Ensure the door hinge pins are in position and aligned correctly.



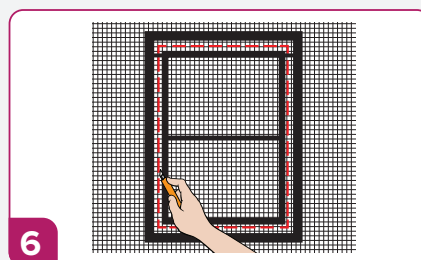
Using a rubber mallet, gently tap interlocking door sides together over flyscreen.

Recommended

Pierce the flyscreen at every pin and hole with a sharp utility knife or similar. This will allow frame to stay in place when interlocking.



Secure pet door with screws provided using a phillips head screw driver. Start by inserting screws onto opposite end of screw sleeve, secure.



Using a sharp utility knife, cut along the flap edge (red line) as shown above.

PILLAR



Pillar Products PTY LTD
pillarproducts.com.au

48-50 Access Way,
Carrum Downs VIC 3201
1300 155 355
info@pillarproducts.com.au